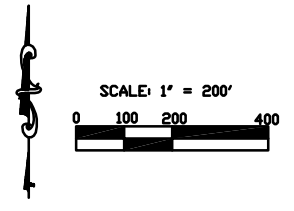


- R-1 1-FAMILY RESIDENTIAL
- R-2 2-FAMILY RESIDENTIAL
- R-3 MULTI-FAMILY RESIDENTIAL
- R-4 MULTI-FAMILY RESIDENTIAL
- B-1 GENERAL BUSINESS
- B-2 INDUSTRIAL
- PUD
- S-1 SPECIAL
- AGRICULTURE



PLANNING BOARD MEMBERS

PLANNING BOARD MEMBER

PLANNING BOARD MEMBER

PLANNING BOARD MEMBER

PLANNING BOARD MEMBER

GARY JOHNSTON MAYOR

COPYRIGHT 2006 BY FANNING/HOWEY ASSOCIATES, INC.

VILLAGE OF PLEASANT HILL
ZONING MAP

MIAMI COUNTY, OHIO

FANNING HOWEY
CIVIL ENGINEERING DIVISION
www.fh.ai.com/civilengineering | 419.586.2292

DRAWN BY: DEW	CONC. NO.: 203819.03	REVISION NO. DATE
CHECKED BY: JMW	DATE: AUGUST 29, 2006	UPDATED: FEBRUARY 2007
ZONING MAP 203819.03		